



### □ **G1993** Safety Station with Eye/Face Wash, All-PVC Construction

**Application:** All-PVC combination eye/face wash and shower safety station. Unit is constructed entirely of PVC and PVC-coated components for superior corrosion resistance. Ideal for industrial environments where harsh acids or caustics are present. Eye/face wash features two large FS-Plus™ spray-type outlet heads that deliver a flood of water for rinsing eyes and face.

**Shower Head:** 10" diameter orange ABS plastic with 20 GPM flow control.

**Shower Valve:** 1" IPS PVC-coated brass stay-open ball valve. Valve is US-made with chrome plated brass ball and PTFE seals. Furnished with stainless steel actuating arm and 29" stainless steel pull rod.

**Spray Head Assembly:** Two FS-Plus™ spray heads. Each head has a "flip top" dust cover, internal flow control and filter to remove impurities from water flow.

**Eye/Face Wash Bowl:** 11-3/4" diameter orange ABS plastic.

**Eye/Face Wash Valve:** 1/2" IPS PVC-coated brass stay-open ball valve. Valve is US-made with chrome plated brass ball and PTFE seals.

**Pipe and Fittings:** Schedule 80 PVC.

**Supply:** 2" IPS socket weld top female inlet.

**Waste:** 2" IPS socket weld female outlet.

**Sign:** ANSI-compliant identification sign.

**Quality Assurance:** Valve and spray head assemblies are factory assembled and water tested prior to shipment.

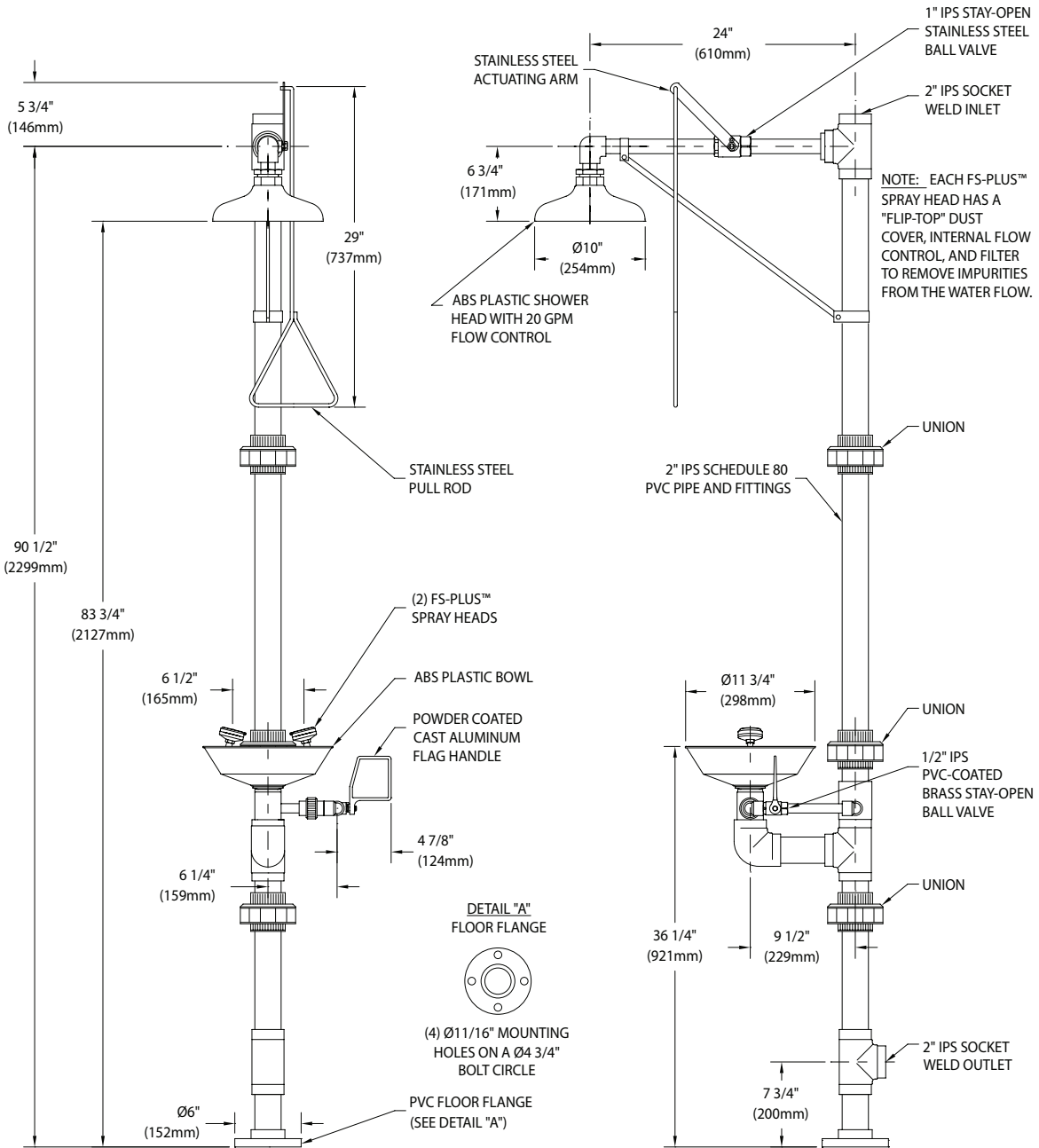
### Available Options

- **G6040** Thermostatic mixing valve precisely blends hot and cold water to deliver tepid water as required by ANSI Z358.1-2014. Refer to "Thermostatic Mixing Valves" section for complete technical and product selection information.
- **GRN** Green ABS plastic shower head and bowl.
- **YEL** Yellow ABS plastic shower head and bowl.
- **SSH** Stainless steel shower head.
- **AP275-200** Electric flashing light and alarm horn unit for mounting on wall or vertical pipe. Light illuminates and horn sounds when eye/face wash or shower is activated. Furnished complete with flow switch and mounting hardware.





### □ G1993 Safety Station with Eye/Face Wash, All-PVC Construction



THIS SPACE FOR ARCHITECT/ENGINEER APPROVAL

Sign Included



Due to continuing product improvement, the information contained in this document is subject to change without notice. All dimensions are ± 1/4" (6mm). rev. 121019

Guardian Equipment 312 447 8100 TELEPHONE  
1140 N North Branch St 312 447 8101 FACSIMILE  
Chicago, IL 60642 gesafety.com

Listed 8116. Units have been tested to and comply with ANSI Z358.1-2014 and the Uniform Plumbing Code.

